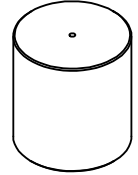


The Ray-Vin SuperSmoker (patent pending) has been engineered for simplicity of construction and ease of use. The SuperSmoker is constructed from the finest materials for corrosion resistance and a long and trouble-free life.

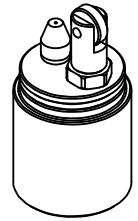
Please read the instructions! The smoker is designed for intermittent use for blackening the sights on rifles and pistols. It is not intended to be used as a candle or lamp and will melt if left burning for an extended period of time. Extinguish the flame when you are finished smoking your sights and replace the safety cap. Keep from freezing.

**You must read both pages!  
It will only take a minute.**

Safety Cap



Firehead



The Super Smoker is composed of two main sub-assemblies; the firehead and the water injector. Carbide is stored in the firehead and water is stored in the water injector. A special valve keeps water from leaking into the firehead until you need it.

The firehead is equipped with a flint wheel ignition system. The jet in the firehead has a cotton filter to keep it clean. Should the filter become clogged, you can replace it with cotton, or in a pinch, a bit of rag or paper towel. Never leave the jet unfiltered.

The safety cap serves four purposes; first, it protects the jet and flint wheel, second, it keeps the flint wheel from rubbing on something and re-lighting the flame (and setting your kit on fire!), third, it is a sifter to separate the dust from the rocks, and fourth, it allows the firehead to sit upside down when loading carbide.

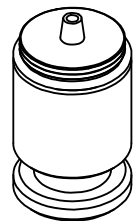
**Loading Instructions:**

- 1) Separate the firehead and the injector by unscrewing.
- 2) Remove the pump knob from the injector by unscrewing.
- 3) Fill injector **FULL to overflowing** with clean water. **Avoid** trapping any air inside the injector.
- 4) Replace the pump knob **DISPLACING EXCESS WATER & AIR** and screw it in until you feel the o-ring bite and water jets from the injector valve.
- 5) Dry Excess water and set injector aside.
- 6) Set the firehead upside down with the safety cap in place.
- 7) Fill fire head no more than 1/2 full with lamp grade carbide.
- 8) Screw injector into the fire head to **firmly** compress the o-ring seal.  
(at least 1/4 of a turn after contact.)
- 9) The smoker is now ready to use.

**Operating Instructions:**

- 1) Always give the smoker a shake to distribute rocks and powder & remove safety cap.
- 2) **Check jet o-ring and firehead/injector o-ring - make sure they are tight!**
- 3) Turn pump knob in just a tiny little bit. No more than 1/8 turn clockwise.
- 4) Point firehead away from face, body and anything flammable.
- 5) Strike a spark with the flint wheel to ignite the acetylene.  
(If smoker does not light, turn the pump knob in just a little more.)
- 6) Smoke gun sights. Turn pump knob in to increase flame.  
(Avoid the urge to turn the pump knob backwards to reduce the flame. It will not reduce the flame and might draw air into the water chamber.)
- 7) Extinguish the flame!
- 8) Replace safety cap.

Water Injector



Pump Knob

Tip: Let your smoker sit overnight before cleaning out the carbide chamber. This will dry it out and there will be nothing but dry powder and rocks inside. Use the sifter cap to separate the rocks for re-use and blow the dust off the threads before re-assembly.



## NOTICE! SUPERSMOKER CAUTIONS!

You must read and understand all instructions before operating. Contact [rvb@ray-vin.com](mailto:rvb@ray-vin.com) if you have any doubts as to safe operation.

Failure to screw the injector into the firehead to sufficiently compress the O-ring seal (about 1/4 of a turn after contact) may result in a gas leak that could ignite and burn your hand, damage the smoker or both.

*Check this o-ring each time you use your smoker. A gas leak here may ignite and ruin your smoker.*

Do not attempt to operate the smoker with damaged or missing O-rings, if the jet is clogged or if **any** part of it is damaged.

Always hold the smoker away from the face, body and anything flammable when lighting.

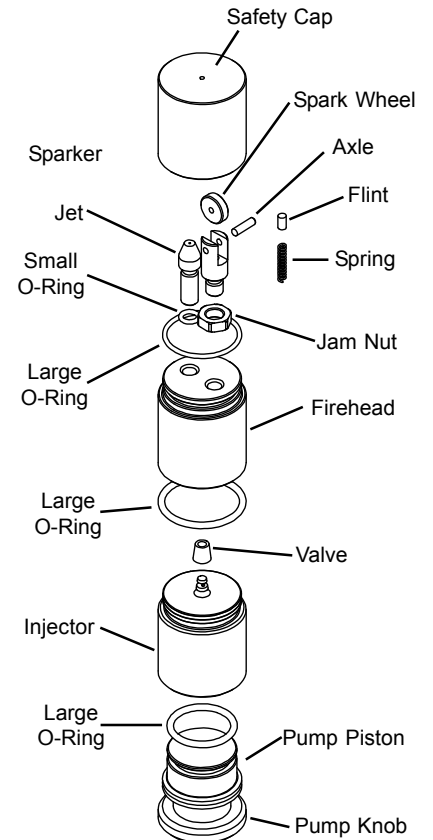
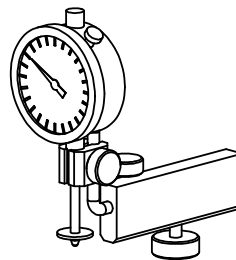
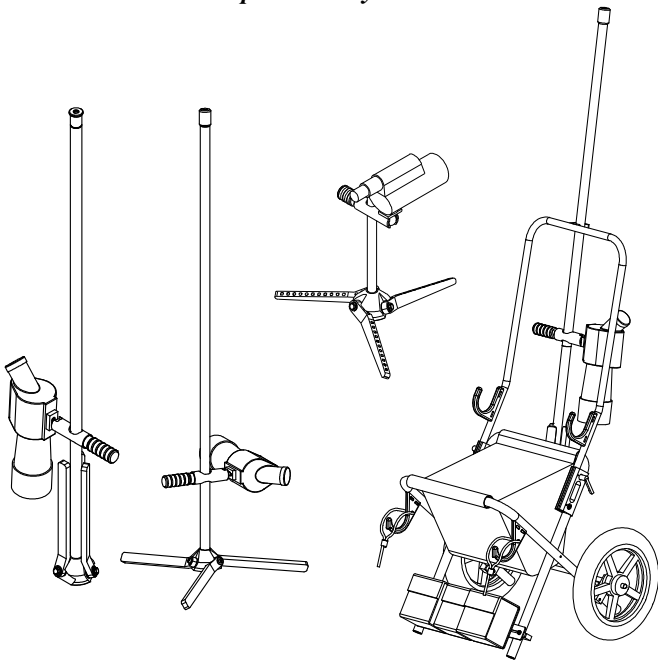
Always replace the safety cap after use.

The smoker continues to generate gas for some time after use. If you stow it in a closed space such as a glove box you can create a dangerous situation if gas is allowed to build up.

**W**e are very pleased with our SuperSmoker . It is as easy to work as a Bic lighter. The design is rugged and durable, using corrosion free materials for long life and trouble free service.

We don't make a lot of shooting accessories, but the ones we make are top notch. Please visit our website to see our other accessories for the competition shooter.

Visit our website for scope stands, shooting carts and other shooting accessories:  
<http://www.ray-vin.com>





**Need  
Carbide?  
See our  
website!**

Order on-line at:  
[www.ray-vin.com](http://www.ray-vin.com)

Ray-Vin  
7515 B Holley Circle  
Panama City Beach, FL 32408